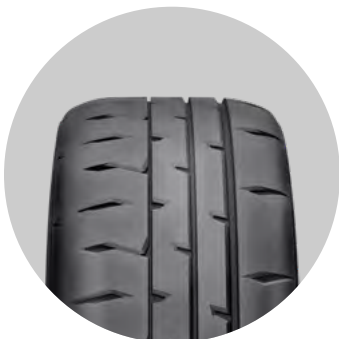


POTENZA™

Bridgestone's Ultra-High Performance family of tires, delivering exhilarating driving for every sports car enthusiast's style, from all-season driving to competitive track days.

BRIDGESTONE
Solutions for your journey



POTENZA RE-71RS™

FEATURES & BENEFITS

- Pole position lap times
- Precision corner handling with enhanced dry and wet grip¹
- Pattern optimization for improved wear performance

The Bridgestone Potenza RE-71RS is **Bridgestone's highest performing consumer tire**, engineered to help serious racing enthusiasts extract more from their grassroots race cars. As the **flagship Potenza product**, RE-71RS is a dedicated track tire designed for **precision performance** in track day, autocross, time attack and endurance racing events. With a blistering fast pace, the Potenza RE-71RS helps enthusiasts chase their next record time.

FITMENTS & SIZES

Sports and Grassroots Race Cars

15", 16", 17", 18", 19", 20"

- Mazda Miata
- Ford Mustang
- Porsche Cayman
- Subaru BRZ
- Honda S2000
- Subaru WRX STI
- BMW 3 Series



POTENZA™ RACE

FEATURES & BENEFITS

- Outstanding track times
- Impressive dry braking
- Superior track longevity

Engineered for **exhilarating performance, speed and handling both on-track and on-road**, the Bridgestone Potenza Race tire is the solution for high-performance sports car owners who want to run a single set of tires. With the versatility of the Potenza Race, drivers can chase the thrill of weekend track driving and still open it up on their way back home with the same outstanding tires.

FITMENTS & SIZES

Sports and Super Cars

17", 18", 19", 20"

- Lamborghini Huracán
- Porsche 911 Type 991
- Maserati MC20
- Ferrari 458 Speciale
- Ferrari 488 GTB



POTENZA™ SPORT

FEATURES & BENEFITS

- Responsive high-speed grip and steering
- Enhanced cornering with confident dry braking²
- Consistent wet acceleration and handling

Unlock the performance of your favorite sports car with the Bridgestone Potenza Sport **summer tire**. Designed to bring **excitement** and a **more responsive handling** experience to your **daily drive**, the Bridgestone Potenza Sport is the only excuse you need to take the long way home, just for the thrill of it.

FITMENTS & SIZES

Sports Car

16", 17", 18", 19", 20", 21", 22"

- Porsche 911
- BMW M3
- Toyota Supra
- Chevrolet Corvette



POTENZA™ SPORT AS

FEATURES & BENEFITS

- Precision wet performance
- Responsive grip to command the road
- Winning performance for winter roads

Engineered with **sporty handling** and precision wet performance, the Potenza Sport AS tire is an **all-season champion** for your performance vehicle. Because your favorite performance vehicle shouldn't be reserved only for sunny summer days.

FITMENTS & SIZES

Sports Car, Sports Sedan, SUV

16", 17", 18", 19", 20", 21", 22"

- Alfa Romeo Giulia
- Audi A4/S4/A5/S5/Q5
- BMW 3 Series
- Mustang GT
- Infiniti Q50
- Acura TLX
- Lexus IS/ES
- Mercedes-Benz C-Class/CLA/E-Class

¹ Comparison based on the Bridgestone Potenza RE-71RS tires vs. the Bridgestone Potenza RE-71R tires from internal testing. Results may vary depending on proper tire and vehicle maintenance, road conditions, and driving habits.

² Comparison based on the Bridgestone Potenza Sport tire vs. the Potenza S-04 Pole Position tire from internal testing. Results may vary depending on proper tire and vehicle maintenance, road conditions and driving habits.

FIREHAWK™

FIRESTONE'S ULTRA-HIGH PERFORMANCE FAMILY OF TIRES, FOCUSED ON ALL-SEASON AND SUMMER PERFORMANCE.



FIREHAWK™ INDY 500*

FEATURES & BENEFITS

- Dynamic cornering
- Improved wet handling
- Strong summer performance

The Firestone Firehawk INDY 500 is Firestone's **proven performer** when it comes to adding excitement to your daily drive. A tried and true compound gives the Firestone Firehawk INDY 500 a **stiff, sporty feel** with **racing-inspired performance**.

FITMENTS & SIZES

Sports Car

16", 17", 18", 19", 20"

- Ford Mustang
- Nissan 350Z
- Dodge Challenger
- Pontiac GTO



FIREHAWK™ AS V2

FEATURES & BENEFITS

- Strong wet handling
- Impressive dry performance
- Snow stopping power

The Firestone Firehawk AS V2 is built for dependable **all-season** performance to keep the joy of driving rolling year round.

FITMENTS & SIZES

Car, CUV, Sports Car

17", 18", 19", 20"

- Chevrolet Camaro
- Chevrolet Equinox
- Dodge Challenger
- Dodge Charger
- Ford Escape
- Ford Fusion
- Ford Mustang
- Honda Accord
- Honda Civic
- Honda CR-V
- Nissan Altima
- Toyota Camry
- Toyota Corolla
- Toyota RAV4

Firestone

*Comparison based on the Firestone Firehawk Indy 500 tire vs. Firestone Firehawk Wide Oval Indy 500 tire. Results may vary depending on proper tire and vehicle maintenance, road conditions and driving habits.

© 2023 Bridgestone Americas Tire Operations, LLC. All rights reserved.